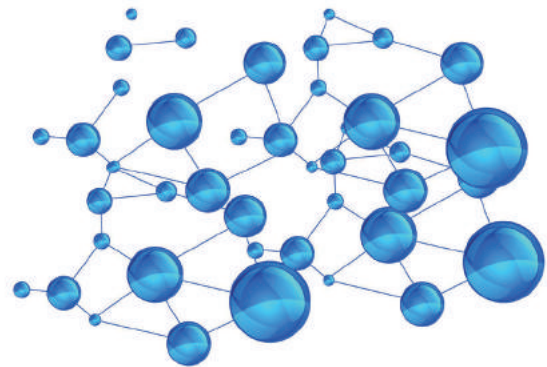


# Ultra-fast Portable Real-time QPCR

Archimed™ Mini 16



 8 °C/s

 30 mins

**SO LITTLE SPACE | SO MUCH POWER**

*Ultra-Fast | Portable | Super-Easy*

---

## Product Introduction

In order to meet the needs of on-site rapid and instantaneous detection such as epidemic prevention and control, entry-exit rapid screening, food safety, environmental microorganism identification and small flux scientific research and teaching, RocGene launched an ultra-fast and portable fluorescence quantitative PCR system Archimed™ Mini 16.

The system adopts innovative liquid circulation refrigeration combined with Peltier temperature control technology to ensure getting results quickly and accurately. Light and small equipment size, which can be free from the constraints of the site, meets the on-site instantaneous detection demands.

The system supports the application of all common real-time fluorescent quantitative PCR detection modes, including qualitative detection, relative quantification, absolute quantification, genotyping, etc.

## Product Feature

### Ultra-Fast

Super fast temperature ramp rate, which makes qPCR tests been done within 30 minutes to ensure getting results quickly on site

### Portable

Small and portable, fully meet the on-site instantaneous detection demands of disease control, customs, commodity inspection, environmental protection, etc.

### Reliable

Accurate temperature control and detection technology, with the same performance as the desktop qPCR, ensuring the reliability of the experimental results.

## Application Fields



Disease  
Prevention  
and Control



Food  
Safety



Medical  
Diagnosis

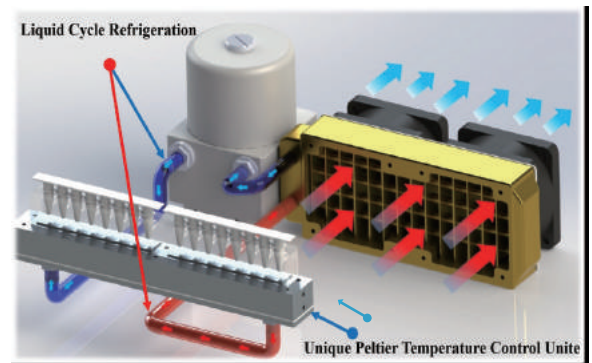


Scientific  
Research

## ◆ Technical Superiority

Innovative liquid circulation refrigeration combined with unique Peltier temperature control technology is adopted to ensure uniform and accurate temperature control performance and realize ultra fast temperature ramp rate. The maximum temperature ramp rate reaches 8 °C/s.

Archimed™ Mini 16 is designed with 16 well position, which can be compatible with the common 0.2ml quantitative PCR transparent reaction tube and the transparent 8-strip reaction tube. The temperature uniformity between wells can be guaranteed ( $\pm 0.2$  °C) by cooperating with the auxiliary heating plate.

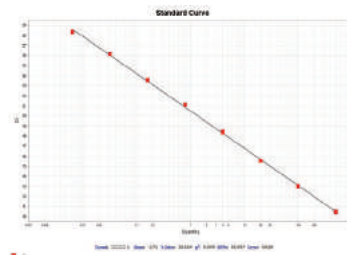


Innovative Thermal Cycler Technology

## ◆ Easy to use Archimed™ Analyzer



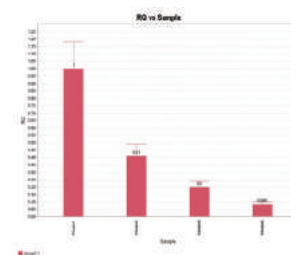
Software Startup



Absolute Quantification



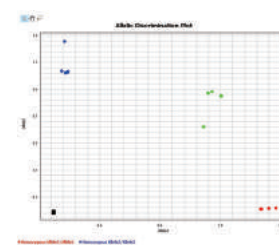
Running Procedure Setting



Relative Quantification



Results Analysis

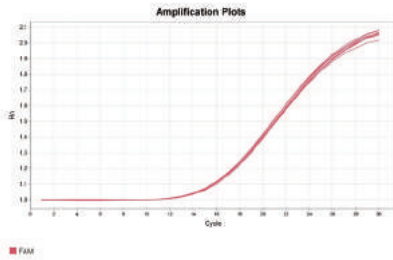


Genotyping

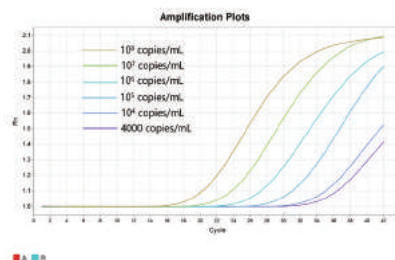




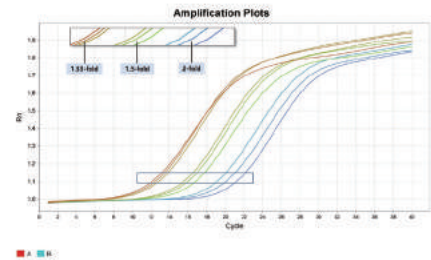
## Reliable Results



Excellent Repeatability



High Sensitivity



Outstanding Resolution

- Excellent repeatability (Ct SD < 0.2) and sensitivity (single copy gene detection), ensuring reliable and accurate results;
- Combined with the rapid PCR detection kit, 40 cycles of amplification can be completed within 30 minutes.



## Technical Specifications

Thermal control		Optical Detection	
<b>Sample Capacity</b>	16 (0.2mL PCR tube or strips)	<b>Light Source</b>	2 or 4 monochrome efficient LEDs
<b>Reaction Volume</b>	10 – 50 μL	<b>Optical Detector</b>	High-performance MPPC
<b>Thermal Cycling Tech</b>	Peltier	<b>Detection Mode</b>	Ultra-fast Time-resolved Scanning
<b>Cooling Method</b>	Liquid cycle refrigeration	<b>Fluorescent Channel</b>	FAM/SYBR Green, VIC/JOE/HEX/TET, JUN, ROX/Texas Red (optional), Mustang Purple, Cy5/LIZ (optional)
<b>Maximum Ramp Rate</b>	8°C/s	<b>Running Time</b>	<30 minutes (combined with rapid kit)
<b>Temp Accuracy</b>	±0.2°C	<b>Sensitivity</b>	Single copy of the gene, the difference of 1.33 times concentration can be distinguished
<b>Temp Homogeneity</b>	±0.2°C @60°C ±0.2°C @95°C	<b>Dynamic Range</b>	10 orders of magnitude
Other Configurations			
<b>Instrument Noise</b>	<50 dB	<b>Size</b>	205 × 190 × 98 mm (L × W × H)
<b>Analysis Module</b>	220VAC, 50/60hz	<b>Operation System</b>	Windows
Analysis Module			
Qualitative Detection, Absolute Quantification, Relative Quantification, Genotyping			



### RocGene Technology Limited

Address: Rm 429-1, Building 1, No. 10, Longyubei Street, Changping District, Beijing, P.R.China

Tel: +86-10-59724295

www.rocgene.com