



# CT820X

LD Chip Tester

Version 1.1





## Product Description

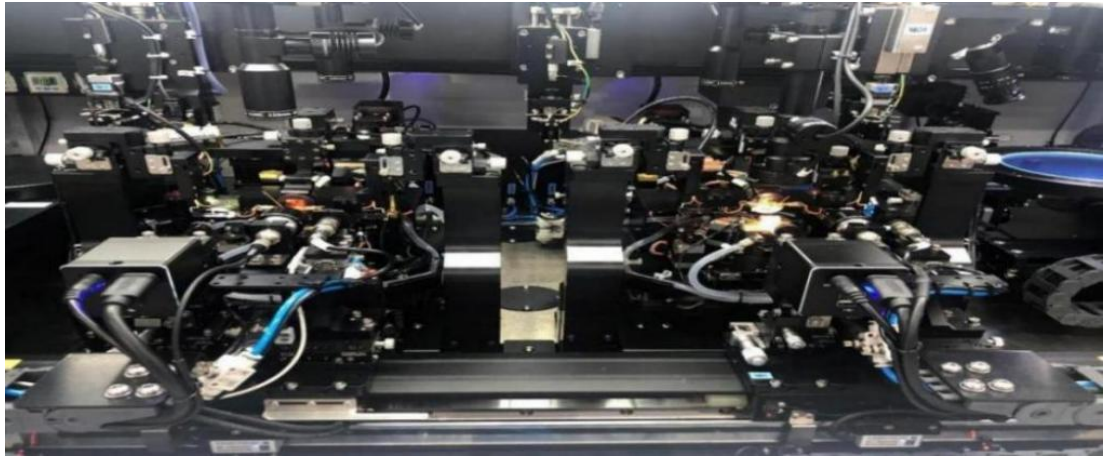
Semight Instruments CT820X is designed for laser chip LIV and spectral scanning parameter test of bare chip. The system integrates DUT ID recognition, wafer ring loading, transportation, room&high temperature testing, low temperature testing, unloading and sorting. Semight Instruments CT820X has fast test speed, and can complete the whole process of taking and placing materials and testing in two temperature zones within 6s. This system is very suitable for mass production. Semight Instruments CT820X is equipped with high accuracy linear motor, oriental motor with high accuracy modular, so the system has high accuracy and stability.

## Key Features

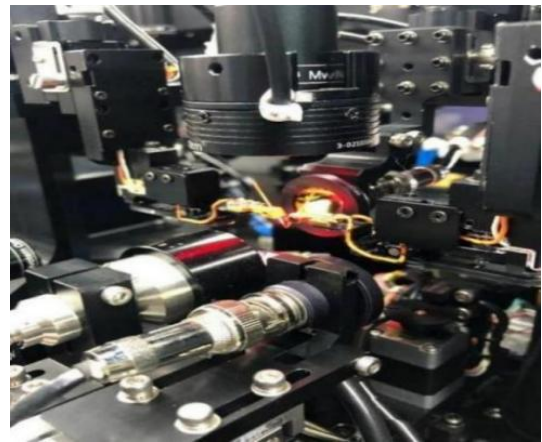
- A highly integrated test solution for bare chip, the entire system supports very complex test processes;
- Automatically correcting chip position through vision and positioning system.
- Automatically probing, probe force is adjustable;
- Support dual temperature zones, temperature stability $<\pm 0.2$  °C;
- The chuck is made of high thermal conductivity and high wear resistance materials, with a long service life;
- Collimating fiber and large area PD switching automatically between LIV and spectrum test.
- Automatically DUT sorting after test;
- All mechanics could return to home independently;
- All instruments, test plan, pass/fail criteria could be configured very easily;
- Data will be saved to database and can be queried very easily. MES interface could be provided;
- Automatic alarm and notice to help operators to handle issues

## System architecture

- CT8201 bare chip test system consists of 4 sections: loading, transportation, testing and unloading.
- Loading: The thimble mechanism peels off the bare Die from the blue tape;
- Transportation: Loading, unloading, transportation, suction nozzle, High precision linear motor (X) and commercial modular(Z);
- Vision system: loading and test vision system operates independently
- Test Area: support IL measurement (CW/Pulse) Front/back simultaneous measurement,WL
- Loading/Unloading and Sorting: support up to four blue taps, software configurable sorting plan, NG container.



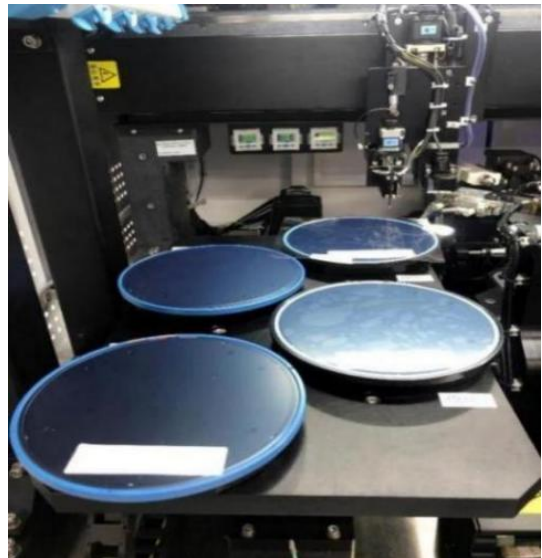
System Internal Overview



Test chuck with high heat dissipation high-abrasion, as well as optical detector and optical coupling system



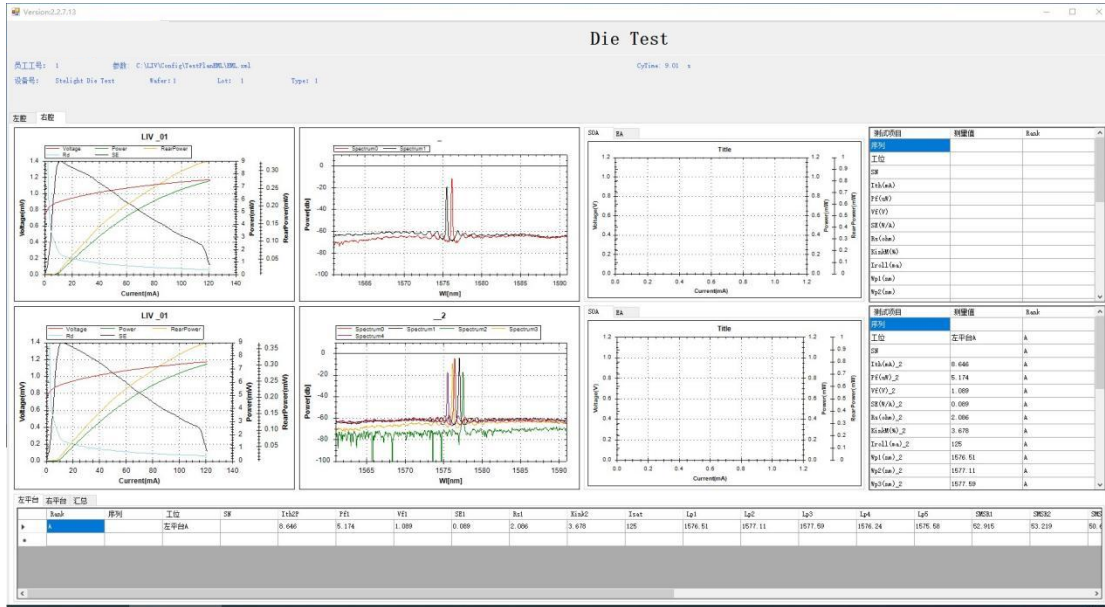
Loading Sections



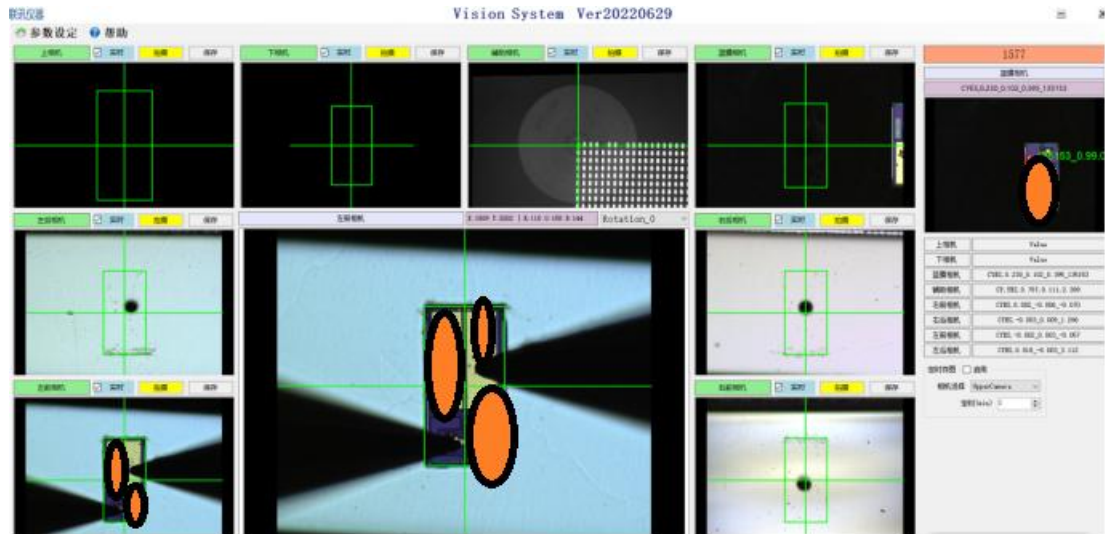
Unloading Sections



## Software function



Testing GUI



Vision GUI

## Technical Specification

<b>System Parameters</b>	Chip type	Support DFB, EML and EML+SOA chips
	Chip size	L&W≥150um, H≥80um~150um
	Test temperature zone	2
	Test Items	Front/back IL, WL
	Test parameters	I <sub>th</sub> , S <sub>e</sub> , I <sub>op</sub> , P <sub>f</sub> , V <sub>f</sub> , Kink, R <sub>s</sub> , I <sub>Roll</sub> , λ <sub>c</sub> , SMSR etc.
	OCR	Auto OCR



	Nip	Specially designed suction nozzle structure, which is stripped from the cartridge first, and then sucked up
	Loading container	1 6-inch blue tap
	Unloading container	4 6-inch blue taps
	Sorting	Support any requirements customer need
	Standard sample control	The software supports the standard sample control function. If the standard sample is tested on the local machine unit exceeding the time cycle (configurable), the system will automatically give an alarm
	Test configuration control	The software supports test configuration control, including test instruments, test algorithms, test sequences, test results judgment, etc.
	Test data	Support all test data required by users/support MES related requirements
<b>Electrical Indicators</b>	SMU type	Standard source/Measurement unit
	DC current	3A
	I/V source resolution	10fA/100nV
	I/V measurement resolution	10fA/100nV Minimum power supply resolution (6.5 Bit)
	Voltage range	70V
	Pulse current	10A
	Overshoot under normal operation	NO EOS
	Undershoot under normal operation	NO EOS
	Overshoot under abnormal operation	NO EOS
	Undershoot under abnormal operation	NO EOS
<b>Optical Indicators</b>	Optical power measurement detector type	Ge
	Optical power wavelength range	800-1700nm
	Optical power measurement range	10uW-25mW (>25mW with attenuation plate )
	Optical power measurement accuracy	0.1dB
	Optical spectrum measurement range	1250-1650nm (850 is an option)
	Optical spectrum measurement accuracy	0.1nm
	Optical power coupling efficiency	Coupled power >-15dBm
<b>Temperature Control Indicators</b>	Temperature control method	TEC
	Temperature range	25~95°C@CT8201 -45~95°C@CT8203
	Temperature area	2 independent temperature control areas (dual load platform)
	Ramp up speed	30°C/ min
	Ramp down speed	30°C/ min
	Temperature accuracy	±0.5°C



	Temperature Stability	$\pm 0.2^{\circ}\text{C}$
<b>Test Parameters Indicators</b>	lth repeatability	$\pm 1\%$
	Power repeatability	$\pm 2\%$
	Wavelength repeatability	$< \pm 0.2\text{nm}$
	SMSR repeatability	$< 3\text{dB}$
	OCR success rate	99%
	Test time	$< 6\text{s}$ (1 IL +3 WL)

## Ordering information

CT8201	25°C to 95°C room& high temperature bare chip tester
CT8203	-45°C to 95°C industrial low temperature bare chip tester



## Contact us

### Mail

Sales [sales@semight.com](mailto:sales@semight.com)

### Address

No. 1508, Xiangjiang Road, Suzhou New District (SND), Jiangsu , China

## About Semight Instruments

Semight Instruments is a leading provider of global high-end test & measurement instrument and equipment. The company provides products and service to R&D, manufacture of high-speed communication, optical chip and semiconductor testing fields. Semight's testing instrument includes high-speed Bit Error Ratio Tester, Network Traffic Analyzer, broadband Sampling Oscilloscope, high-precision Wavelength Meter and digital Source Measure Unit. In addition, the company delivers optoelectronic hybrid ATE, laser chip burn-in system, laser chip tester, silicon photonics wafer tester, power chip tester, wafer level burn-in system to domestic and international customers.

Semight Instruments adheres to the customer-centric, employee-based, innovation-driven, and continues to provide customer trustworthy, cost-effective and high-performance products and service.

Visit [www.semight.com](http://www.semight.com) for more information.

\*This information is subject to change without notice.